

Data Sheet

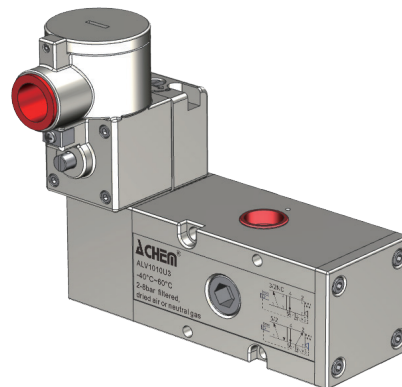
Product ID ALV210L1Q1C10-1012U3

PRODUCT NAME

Multi-Function Pilot Acting Solenoid Valve of Flameproof

DESCRIPTION OF THE PRODUCT

It has two remarkable features. 1. The same valve body can be available with both Namur connection and In-line connection. 2. The 5/2 and 3/2 functions can be easily switched for the same valve body. This type of valve's flow rate is relatively large, and the air port can be 1/2. Armed with stainless steel enclosurecoil, this solenoid valve is excellent for being used inhazardous area Ex db IIC T6 Gb).



APPROVED BY



IP67

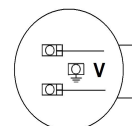
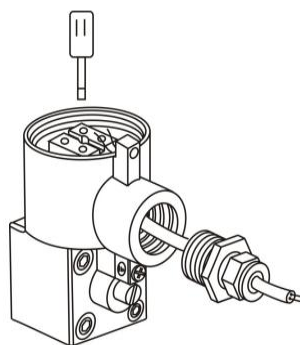
Coil Specification: ALV210L1Q1C10

Coil Enclosure	Stainless steel 316
Wiring Connector	M20-1.5 or 1/2"NPT, Terminal Strip
Operating Voltage	24/110/220VDC±10% ≤5W 24/110/220VAC±10% ≤ 6VA(50/60Hz)
Voltage Tolerance	±10%
Insulation Protection	H class
Insulated voltage	1000V
Duty factor	100% ED
Area Classification	Ex db IIC T6 Gb, Ex tb IIIC T85°C Db, Class I, Division 1, Groups A, B, C, D T6

BODY TECHNICAL DATA

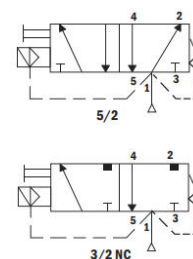
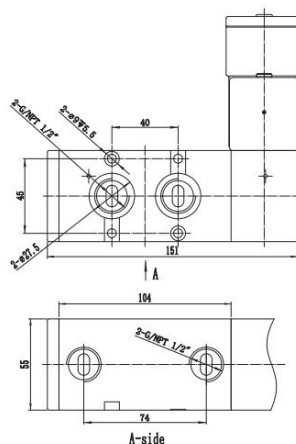
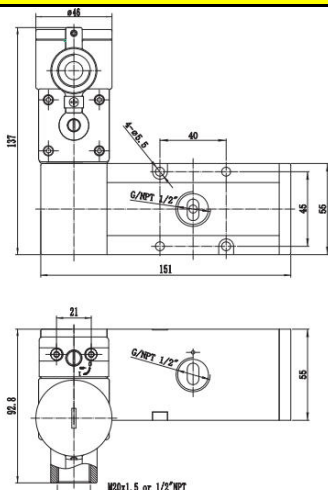
Body	Stainless steel 316
Seal	Buna N
Fasteners	Stainless steel
Function	5/2 or 3/2NC,Pilot acting,Monostable
Flow rate(Orifice)	CV =2.6 (46.26mm²)
Air Ports	G1/2" or NPT
Manual Override	on the body
Mounting	Namur mounting & In-line
Working pressure	2~8 bar
Working Medium	less than 40µm filtered and dried air
Working Temp.	-40℃ ~60℃
Environment.	Indoor and Outdoor
Wiring direction	Front wiring

Wiring Diagram and Operating



Note: The Exd Cable Gland is not included. Enquiry please contact with us.

DIMENSION AND DRAWING



*For continuous improvement of the product, we reserve the right to alter the dimensions, technical data in this data sheet.

ALLIED AUTOMATION

www.allied-actuator.com

info@allied-actuator.com

Data Sheet

Product ID ALV210L1Q1C10-1012U3s

Data Sheet

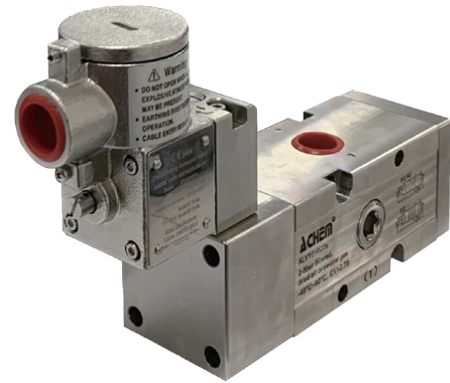
Product ID ALV210L1Q1C10-1012U3s

PRODUCT NAME

Multi-Function Pilot Acting Solenoid Valve of Flameproof

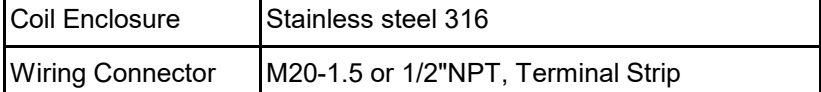
DESCRIPTION OF THE PRODUCT

It has two remarkable features. 1. The same valve body can be available with both Namur connection and In-line connection. 2. The 5/2 and 3/2 functions can be easily switched for the same valve body. This type of valve's flow rate is relatively large, and the air port can be 1/2. Armed with stainless steel enclosurecoil, this solenoid valve is excellent for being used inhazardous area Ex db IIC T6 Gb).

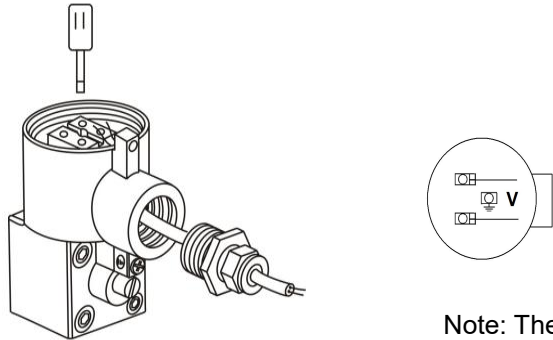


APPROVED BY _____

Coil Specification: ALV210L1Q1C10

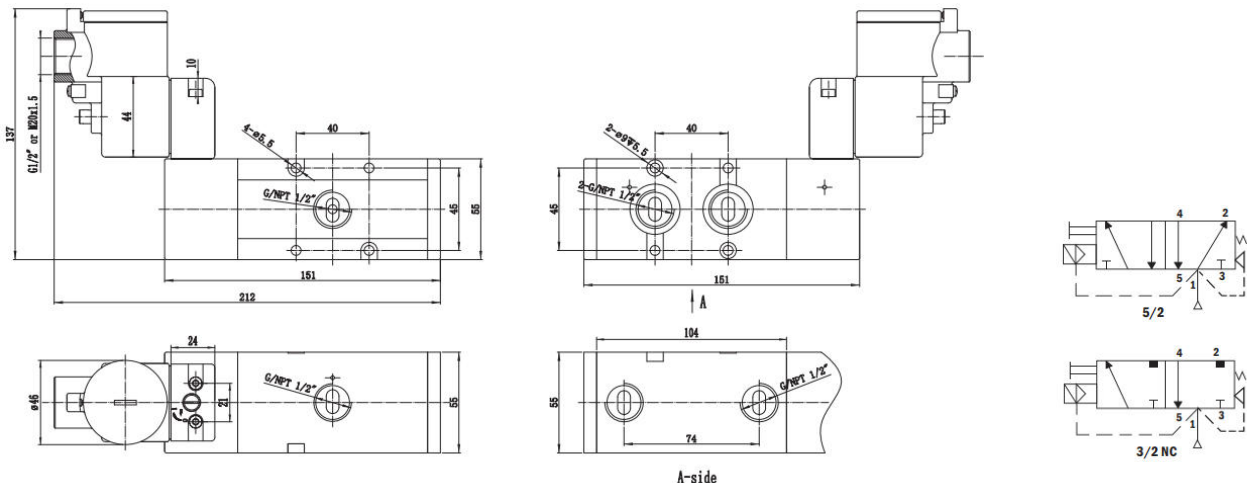


BODY TECHNICAL DATA

Body	Stainless steel 316	Operating Voltage	24/110/220VAC±10% ≤ 6VA(50/60Hz)
Seal	Buna N	Voltage Tolerance	±10%
Fasteners	Stainless steel	Insulation Protection	H class
Function	5/2 or 3/2NC,Pilot acting,Monostable	Insulated voltage	1000V
Flow rate(Orifice)	CV =2.6 (46.26mm ²)	Duty factor	100% ED
Air Ports	G1/2" or NPT	Area Classification	Ex db IIC T6 Gb, Ex tb IIIC T85°C Db, Class I, Division 1, Groups A, B, C, D T6
Manual Override	on the body	<div style="text-align: center;"> Wiring Diagram and Operating </div> <div style="text-align: center;">  </div>	
Mounting	Namur mounting & In-line		
Working pressure	2~8 bar		
Working Medium	less than 40µm filtered and dried air		
Working Temp.	-40℃~60℃		
Environment.	Indoor and Outdoor		
Wiring direction	Side wiring		

Note: The Exd Cable Gland is not included. Enquiry please contact with us.

DIMENSION AND DRAWING



*For continuous improvement of the product, we reserve the right to alter the dimensions, technical data in this data sheet.

ALLIED AUTOMATION

www.allied-actuator.com

info@allied-actuator.com